

# Mouse C-peptide ELISA Kit

Cat. #M1304



## 【Intended Use】

The Morinaga Mouse C-peptide ELISA Kit is for the quantitative determination of C-peptide in mouse serum, plasma, and fluid. Please read the complete kit insert before performing this assay. The kit is for *Laboratory Use Only*. It is not intended for use in diagnostic procedures.

## 【Introduction】

C-peptide is formed from pro-insulin and co-secreted with insulin. Measuring the amount of C-peptide is useful as an index of insulin secretion. The Morinaga Mouse C-peptide ELISA Kit is a simple, precise, and sensitive ELISA sandwich assay for mouse C-peptide.

## 【Assay flow】

### Preparation of standard and samples

↓ Dispense 95 $\mu$ L of Sample Diluent per well. Pipette 5 $\mu$ L of the sample (or working standards) per well.

### First reaction

↓ Room Temperature (20-30 $^{\circ}$ C), 1 hour.

### Second reaction

↓ Room Temperature (20-30 $^{\circ}$ C), 1 hour.

### Enzyme reaction

↓ Room Temperature (20-30 $^{\circ}$ C), 30minutes in dark.  
Stop enzyme reaction.

### Measurement of absorbance

## 【Precision】

The intra-assay precision (C.V.) :  $\leq 10\%$

The inter-assay precision (C.V.) :  $\leq 10\%$

The Lot to Lot precision (C.V.) :  $\leq 10\%$

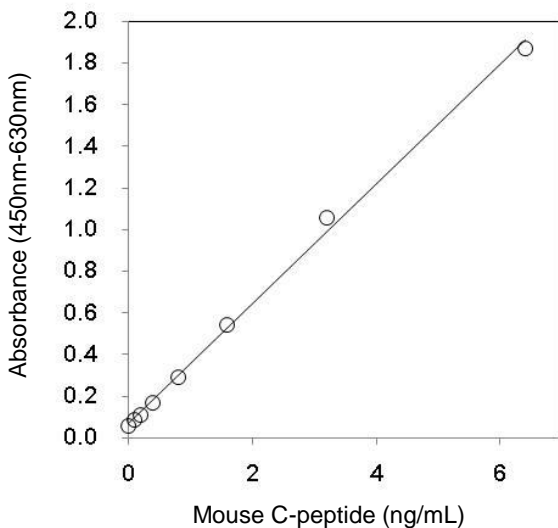
## 【Characteristics of Kit】

- **Sample size**  
Only 5 $\mu$ L
- **Sample**  
Serum, plasma, or fluid
- **Test**  
96 wells (8 wells x 12 modules)
- **Reagents**  
In liquid form (except standard)
- **Assay range**  
0.1-6.4ng/mL
- **Assay time**  
Same day procedure
- **Recovery**  
When mouse C-peptide was spiked in a 5  $\mu$ L mouse serum sample, the recovery was 100%  $\pm$  20%.

## 【Specificity】

Substance	Reactivity
Mouse Insulin	Not Detected

## 【Typical Standard】



	Name of component	Content	Quantity
A	Antibody-coated microplate module (One module consists of 8 wells)	6 modules / pack	2 packs
B	Mouse C-peptide Standard, Lyophilized	2.56ng/vial	2 vials
C	Anti-C-peptide Enzyme Conjugate Stock Solution	13 mL	1 bottle
D	Enzyme Substrate (TMB) Solution*	13 mL	1 bottle
E	Stop Solution (1 N Sulfuric Acid)	13 mL	1 bottle
F	Sample Diluent	30 mL	1 bottle
G	Wash Buffer Stock Solution (20X Concentrate)	50 mL	1 bottle
	Frame for affixing the microplate well module		1 piece
	Plastic microplate cover		1 piece

TMB solution\* : Avoid exposure to light.

## 【Other required reagents and instruments】

- Micropipettes and disposable tips
- Volumetric flasks
- Distilled or deionized water
- Polypropylene microtubes
- Test tube racks
- Vortex mixer
- Aspirator for washing procedure
- Microplate reader  
(capable of measuring A450 and A630 values)

## 【Contact us】

Morinaga BioScience, Inc.

URL : <https://www.miobs-e.com>

E-mail : [info\\_miobs\\_e@morinaga.co.jp](mailto:info_miobs_e@morinaga.co.jp)